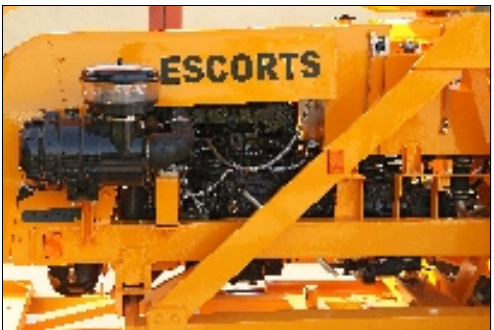


Escorts HYDRA 1665 Pick-n-Carry Crane of 16 T Capacity

Proven, Powerful & Fuel efficient Kirloskar 4R 1040 TC water cooled diesel engine developing 76hp @ 2200 rpm



Engine



Structure

High strength structures for better rigidity, integrity and longer life.

Vertical reach of 19m with 4 part boom and 21m with 4 part boom + flyjib makes it ideal for erection and commissioning jobs.



Vertical Height

Slotted Boom & Rope compensation helps in improving the load positioning & auto levelling of loads.



Slotted Boom and Rope Compensation

Articulation of 56 degree on either side with a low turning radius of 6.2m, ideal for compact areas.



Articulation

Counter Balance Valve



CB valves provided for safety against dropping of loads under hose failures

SLI is loaded with features like Data logger, Calibration without load & Fail safe operation making it accurate, reliable & easy to maintain.



Safe Load Indicator (optional)

Hydraulic Winch



Hydraulic winch of 12T capacity (reputed make) is high on performance & low on maintenance. Six fall snatch block with per line pull of 2.5T.

Combination of top speed of 38kmph for long distance travel & creep speed as low as 1.7 kmph at rated rpm for movement under load makes it ideal for plant hirer



Travel & Creep Speed

Service and Maintenance



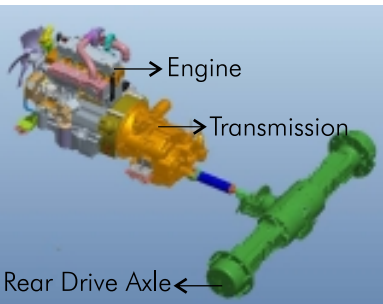
Low on Maintenance, Ease of Service, Ground level access & support across the country.

Spacious cabin with ergonomically designed controls for Operator's comfort.



Cabin and Dash Board

Carraro Synchro - Shuttle Transmission with Torque Converter coupled with rear drive axle provides superior traction, grade-ability & travel speed. 4F & 4R Speeds, Full Synchromesh gears, with electrically operated forward & reverse shuttle provides on-the-go shifting in all gears.



Transmission and Axle

Ground Clearance



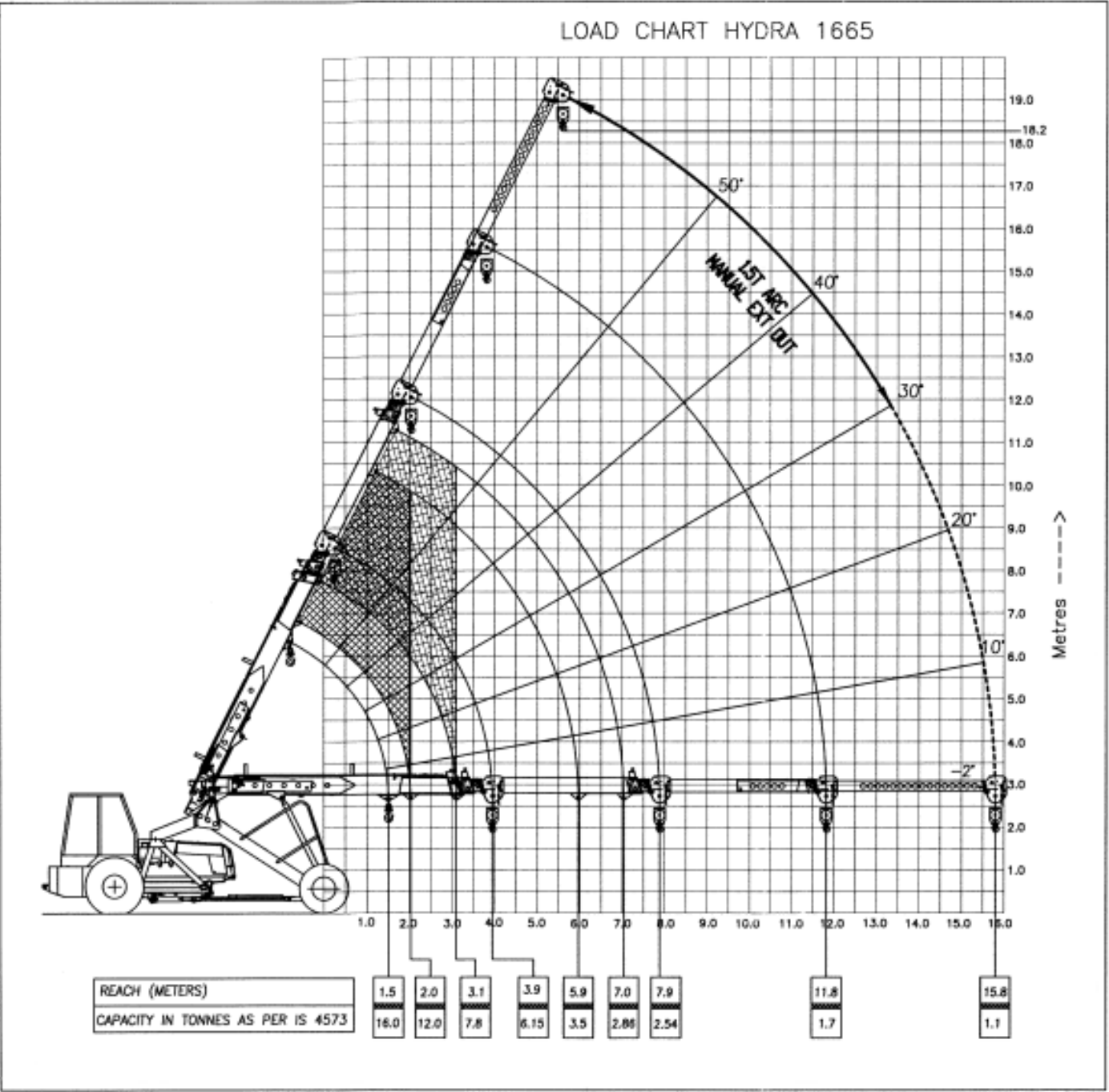
High Ground clearance makes it ideal for uneven project sites & rough terrain application.

PICK-n-CARRY CRANE HYDRA-1665

Specifications:

ENGINE	
Make & Model	Kirloskar model 4R1040TC, 4 cylinder water cooled BS-III (CEV) compliant diesel engine developing 76 HP (56 KW) @ 2200 rpm
TRANSMISSION	
Type	Carraro Synchro - Shuttle Transmission with Torque Converter. Speed - 4 forward & 4 reverse, Full Synchromesh in all gears, with electrically operated forward & reverse shuttle, provide on-the-go shifting in all gears.
Travel Speed	Max speed 38 Km/h (unladen)
Creep Speed	1.7 km/h at rated rpm
Clutch	Clutchless operation
STEERING	
Type	Articulated power steering, hydraulically controlled through 2 double acting jacks
Articulation	up to 56° on either side
Turning Radius	6.2 m
OPERATIONAL TIMINGS (no load at rated engine RPM)	
Steering (lock to lock)	6 - 10 sec
Boom Raising	19 - 24 sec
Boom Lowering	10 - 15 sec
Telescoping	
Extension in	12 - 15 sec
Extension out	17 - 20 sec
Hoist Line Speed	50m/min
BRAKES	
Front Wheel	Pneumatically assisted hydraulic brake.
Rear Wheel	Pneumatically assisted hydraulically actuated dual line self adjusting oil immersed, multidisc on rear axle, well protected from dirt, water etc, requiring no maintenance.
Parking	Hand operated caliper disc brake on rear axle
TRACK	
Front	1920 mm
Rear	1680 mm
TYRES	
Front	12.00 X 20 - 18PR (4 nos.), inflation pressure 115 PSI
Rear	14.00 X 25 - 20PR (2 nos.), inflation pressure 69 PSI
BOOM	
Luffing Angle	Upto 63°
Telescoping	4 part box type boom, 3 part hydraulically powered & fully synchronised, 4th part power extended & manually pinned
Type	Rope compensated & synchronised.
Derricking	Through double acting jacks.
HOIST MECHANISM	
Hoist	Hydraulic winch (reputed make) of 12T capacity with six fall snatch block. Rope dia 13 mm
HYDRAULIC SYSTEM	
Pump	Vane type hydraulic pump.
Control Valve	4 spool control valve with built in pressure relief valve and precision control.
Hydraulic Filter	Suction line has a 100 mesh inline strainer while return line has 10 microns full flow filter.
ELECTRICAL SYSTEM	
Type	12V Single battery, Negative earth
CAPACITIES	
Fuel Tank	70 Ltrs.
Hydraulic Tank	130 Ltrs.
OPERATING WEIGHT(Kg)	
	13820 Kg
OVERALL DIMENSIONS	
Length	: 10900 mm
Width	: 2600 mm
Height	: 3470 mm
SAFETY SYSTEM	
	Overload audio warning system. Rope Compensation for auto levelling Safety brakes on hoist. Hose protection failure device. Cylinder guard for protection.
STANDARD ACCESSORIES	
	• All weather cabin • Lift Cylinder Guard • Front Bumper • Reflectors • Rear View Mirror • Turn & Reverse lamp
OPTIONAL ACCESSORIES	
	• Fly Jib • Fire Extinguisher • Spark Arrestor • Air Conditioned Cabin • Steering Wheel • Safe Load Indicator with hydraulic cut off • Over Hoist & Over Load Cut off

Load Chart HYDRA 1665



ESCORTS
CONSTRUCTION EQUIPMENT

Plot No. 219, Sector 58, Ballabgarh-121 004, Haryana, India
Tel.: +91 129 2306 300, Fax: +91 129 2306 463 | e-mail: exports.ece@escorts.co.in | www.escortsece.com



Escorts Pick-n-Carry Crane 16T Capacity

- 16T Crane With 65 ft Boom
- Carraro Transmission & Rear Axle
- Max. Boom Height Attained 19m/21m With Fly Jib
- Travel Speed Of 38 km/hr
- Creep Speed Of 1.7 km/hr At Rated rpm
- Heavy Duty Winch Of 12T Capacity
- Slotted Boom With Rope Compensation
- Safe Load Indicator (optional)

THE POWER OF EXTRA CAPACITY, REACH & STABILITY