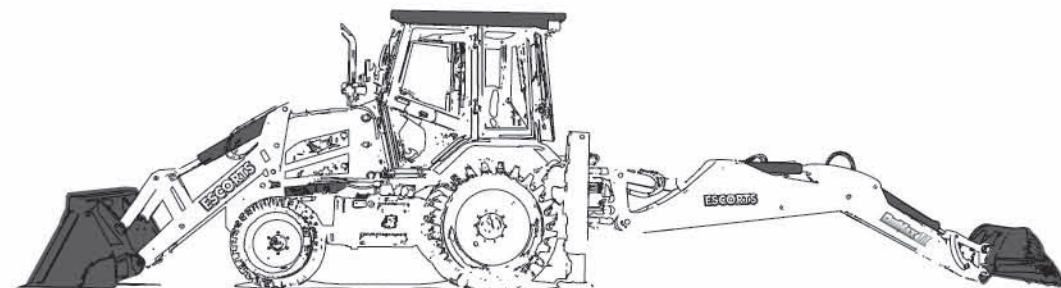




**ESCORTS**  
CONSTRUCTION EQUIPMENT

Plot No.- 219, Sector-58, Ballabhgarh-121 004  
Distt.- Faridabad, Haryana (INDIA)  
Tel.- 0129- 2306574 / 2306598 / 2306571  
Fax- 0129- 2306463  
Toll Free No: 1800- 180- 4488  
(Timings: 9.30 am - 5.00 pm, Monday to Friday)  
Email - ece.marketing@escorts.co.in  
Web Site - www.escortsece.com



# DIGMAX III

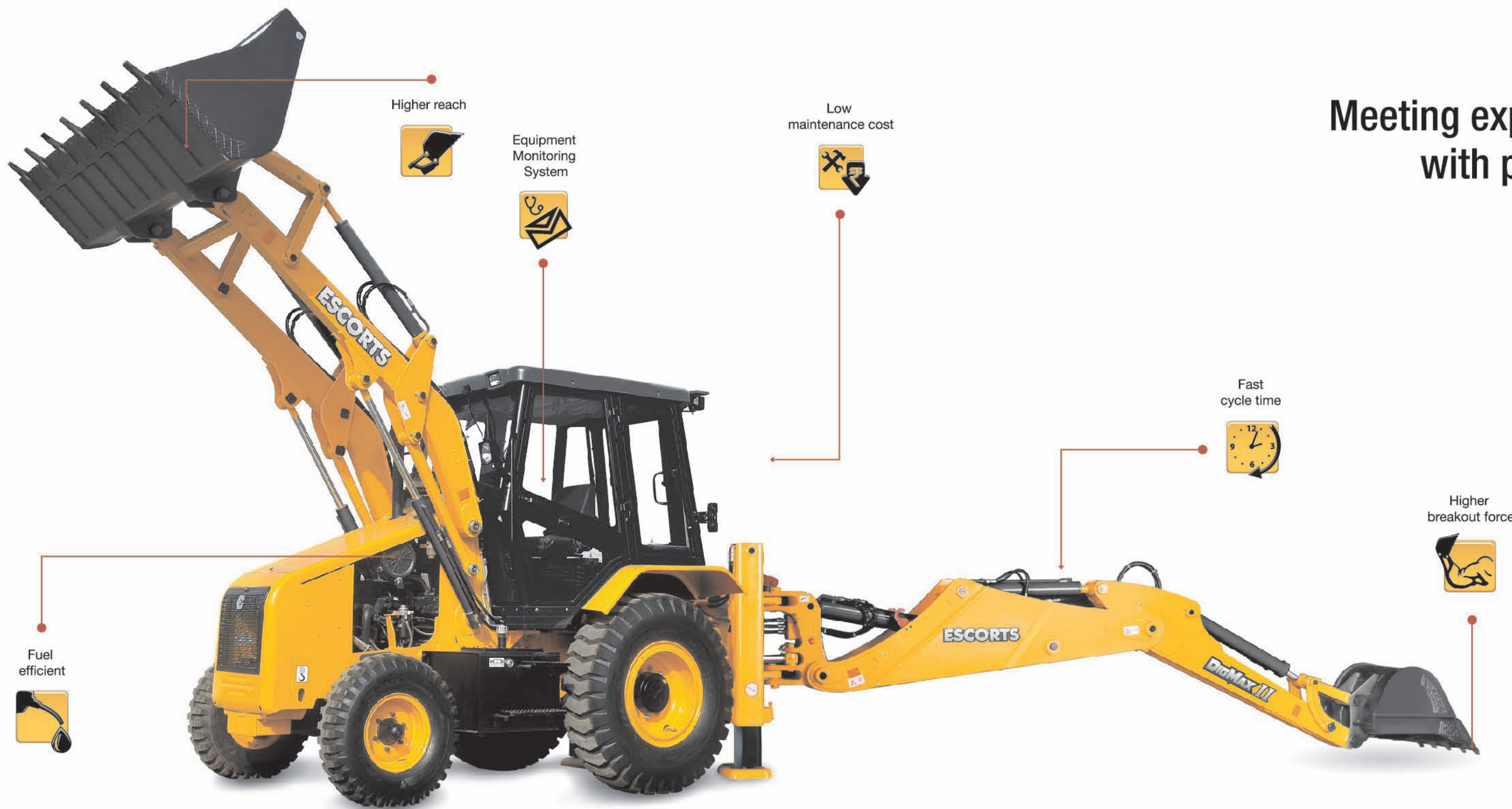
**Redefining  
the excellence  
of DIGMAX**

- Fuel efficient
- Equipment Monitoring System
- Low maintenance cost
- Higher reach
- Higher breakout force
- Fast cycle time



**ESCORTS**  
CONSTRUCTION EQUIPMENT





## Meeting expectations with performance



Rugged Rear Axle



Spacious Ergonomically Designed Cabin



Heavy Duty Transmission



Hard Faced Buckets



Co-axial Carriage



Superior Wear Pad Adjustment Mechanism



Modular Valve Block



Equipment Monitoring System



# DIGMAX II 4x4

## Engine

- Proven, powerful and fuel efficient Kirloskar 4R1040TA, water cooled diesel engine
- Gross Power: 66.2 kw (90HP) at 2200 rpm
- Max Torque (Gross): 350 Nm @1400 ±100 rpm
- Meets Bharat stage –III (CEV) emission norms

## Hydraulics

- Hydraulic pump - Tandem Gear Pump
- Maximum flow (both pumps) 117.5 lpm @ 2200 rpm
- System main relief setting 225 bar
- Fixed flow, open centre two pump unloading energy efficient hydraulic system

## Transmission

- Four Speed (4F, 4R gear) Syncro shift, electrically controlled 2WD or 4WD, reversing shuttle transmission provides superior traction, gradeability, higher force while entering pile or during dozing operation
- Neutral start provision prevents starting when shuttle is engaged
- Gear lever with transmission disconnect switch adds to the overall ease of gear shifting

## Weight

- Operating Weight 8400 Kg



**Extendible Dipper (Optional)**

## Travel Speed

	F/ R gear
• 1st Gear	5.3 kmph /4.6 kmph
• 2nd Gear	8.5 kmph /7.0 kmph
• 3rd Gear	18.5 kmph /Not recommended
• 4th Gear	36.6 kmph /Not recommended

## Brakes

- **Service brakes:** Hydraulically actuated dual line, self adjusting, oil immersed, multi disc type on rear axle
- **Parking brakes:** Hand-operated caliper disc brakes

## Axles

- Front Drive and steer axle with 12 deg oscillation for maximum ground contact in undulated condition
- Rear drive axle, rigidly mounted to chassis

## Steering

- Hydrostatic power steering in front wheel
- Hydraulic supply from pump via priority valve for quick response steering
- Working pressure: 120 bar

## Tyres

- Front (Std): 12.5/80-18, 12PR
- Rear (Std): 16.9 x 28-12PR



**Front Drive Axle**

## Service Refill Capacities

Hydraulic system oil	110 litres
Fuel tank	134 litres
Engine coolant	15 litres
Engine oil	11.5 litres
Transmission oil	16.5 litres
Rear axle oil	17.1 litres
Front axle oil	9.1 litres
Brake reservoir oil	1.0 litres

## Equipment Monitoring System

GPS + GSM based equipment monitoring system is a standard fitment and provides sms alerts for effective equipment management and acts as a diagnostic tool

## Warning Message-SMS, Mail, Online

- Engine Coolant Temperature
- Hydraulic Oil Temperature
- Transmission Oil Temperature
- Engine Oil Pressure
- Battery Charging Status
- Machine Idle Information
- Fuel level Information

## Optional Attachments

- Heavy duty rear tyres: 14x25-20 PR
- Rock Breaker
- Ripper Tooth
- Extendible dipper
- A.C. Cabin
- Trenching Buckets - 0.09 Cum, 0.12 Cum, 0.18 Cum
- Special Purpose Buckets - 0.30 Cum, 0.32 Cum
- Coal Bucket - 1.5 Cum
- Multi Purpose (6-in-1) Bucket
- 300 mm Trench Bucket (Optical Fibre Cable Laying Application)
- Rock Bucket - 0.26 Cum

### Warning

All dimensions, weights, timings mentioned are with standard tyres, dipper, buckets are variable within ±5% ECE has the right to change values given & design shown without giving a notification.

# DIGMAX II 4x4

## PERFORMANCE DIMENSIONS

### LOADER PERFORMANCE (Figure 1)

M : Dump height (Cutting edge)	3.00	m
N : Load over height (Cutting edge)	3.51	m
O : Pin height (Cutting edge)	3.7	m
P : Pin forward reach	0.43	m
Q : Reach at ground	1.57	m
R : Max reach at full height	1.22	m
S : Reach at full height - Bucket dumped	0.85	m
T : Below ground level dig depth	0.11	m
U : Rollback at ground	45	deg
V : Dump angle	45	deg
Bucket breakout force	6425	kgf
Loader arm breakout force	5777	kgf
Payload	1980	kg
Return to Dig	Available	
Self Leveling	Available	
Loader Bucket Capacity	1.2	Cum

### EXCAVATOR PERFORMANCE (Figure 1 & 2)

A : Max dig depth (Bucket in dump Position)	4.80	m
B : Reach ground level to rear wheel centre	6.97	m
C : Reach ground level to slew center	5.65	m
D : Reach at full height to slew center	2.23	m
E : Side reach to center line of machine	6.00	m
F : Max working height (Stab's fully out)	6.30	m
G : Max load over height (Stab's fully out)	4.39	m
H : King post travel	1.00	m
J : Bucket rotation power	187	deg
Bucket tear out force	6018	kgf
Dipper tear out force	3250	kgf
Lift capacity of bucket at full reach (SAE J31)	1554	kgf
Co-axial Carriage		
Excavator Bucket Capacity	0.26	Cum

## STATIC DIMENSIONS

### STATIC DIMENSIONS (Figure 3, 4 & 5)

AA : Overall length (transport mode)	6.28	m
A1 : Overall length (travel mode)	7.85	m
BB : Wheel base	2.14	m
CC : Rear wheel to slew center	1.38	m
DD : Minimum ground clearance	0.35	m
EE : Slew ground clearance	0.59	m
GG : Height to top of cab	2.88	m
HH : Overall height	3.78	m
JJ : Track width - Rear	1.75	m
KK : Track width - Front	1.87	m
LL : Width over bucket	2.38	m
L1 : Width (Transport mode)	2.56	m

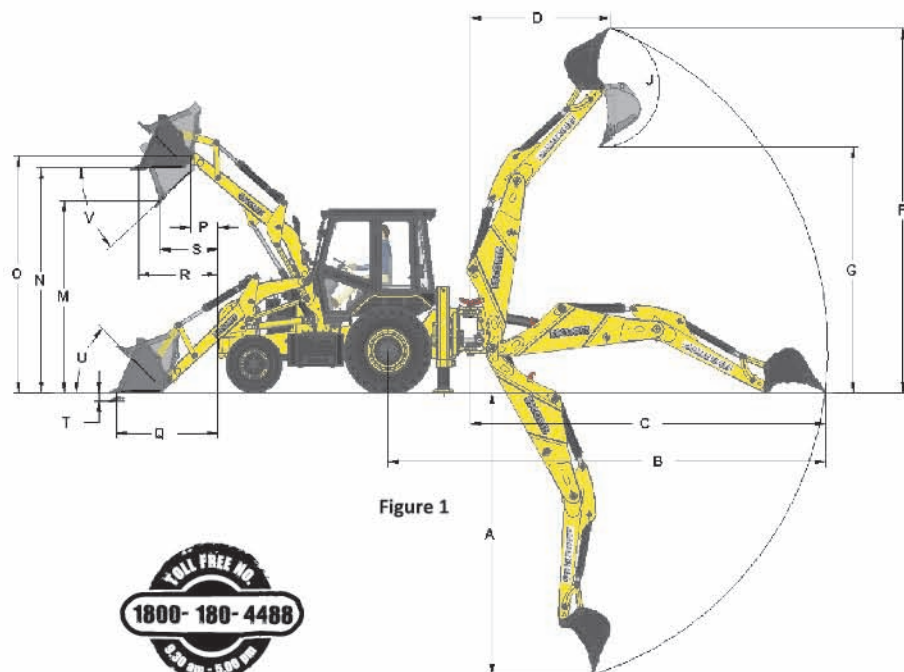


Figure 1



#### Warning

All dimensions, weights, timings mentioned are with standard tyres, dipper, buckets are variable within  $\pm 5\%$ . ECE has the right to change values given & design shown without giving a notification.

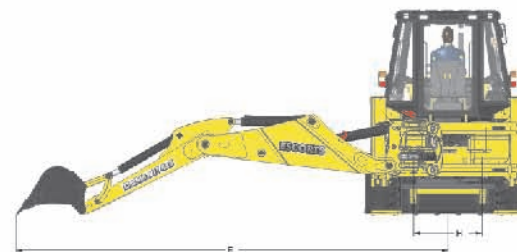


Figure 2



Figure 3

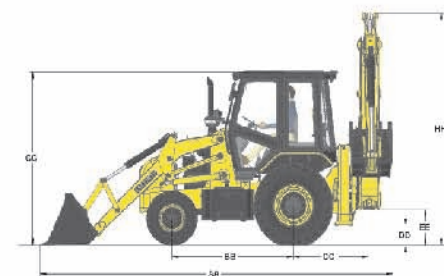


Figure 4



Figure 5

